

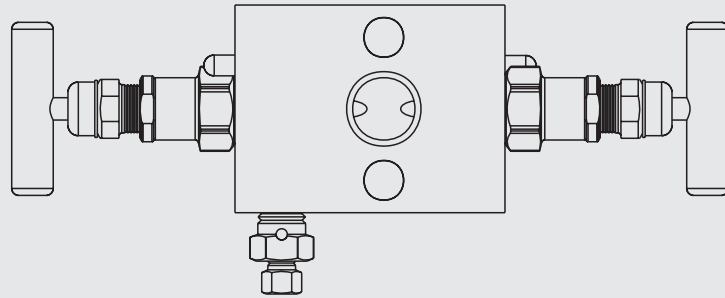


CE0035

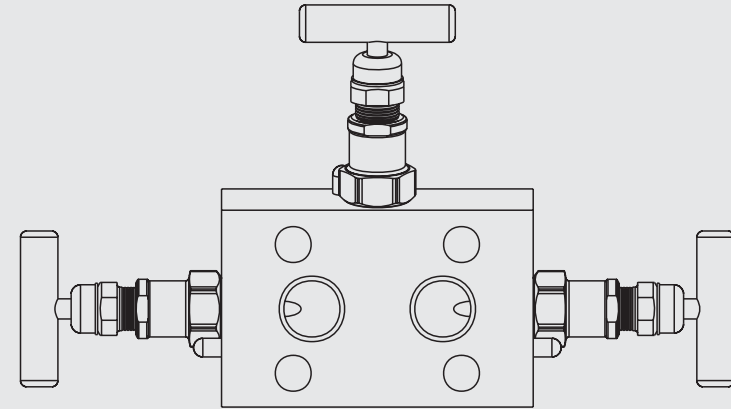
SUSTECH Precision
F Series Direct Mount Manifolds

F Series Valves

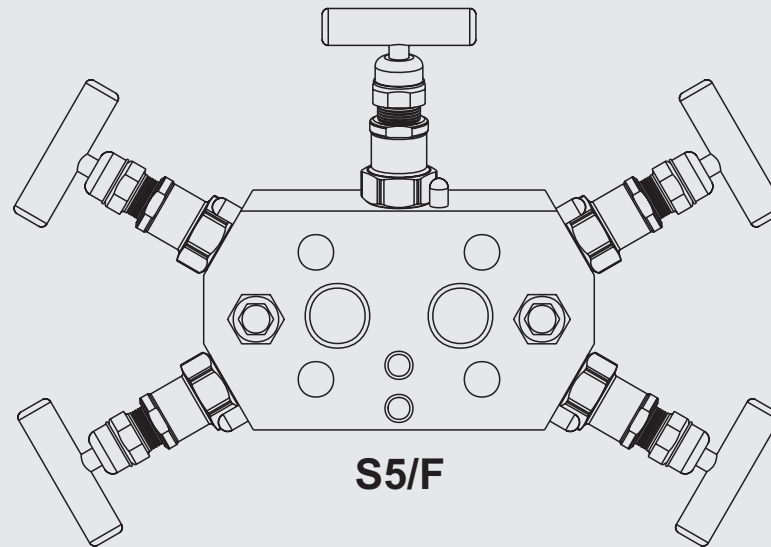
Fully Certified Instrument Valves
SUSTECH Precision
DIN EN ISO 9001:2000 CSA Pending
ATEX PED 97/23/EC



S2/F

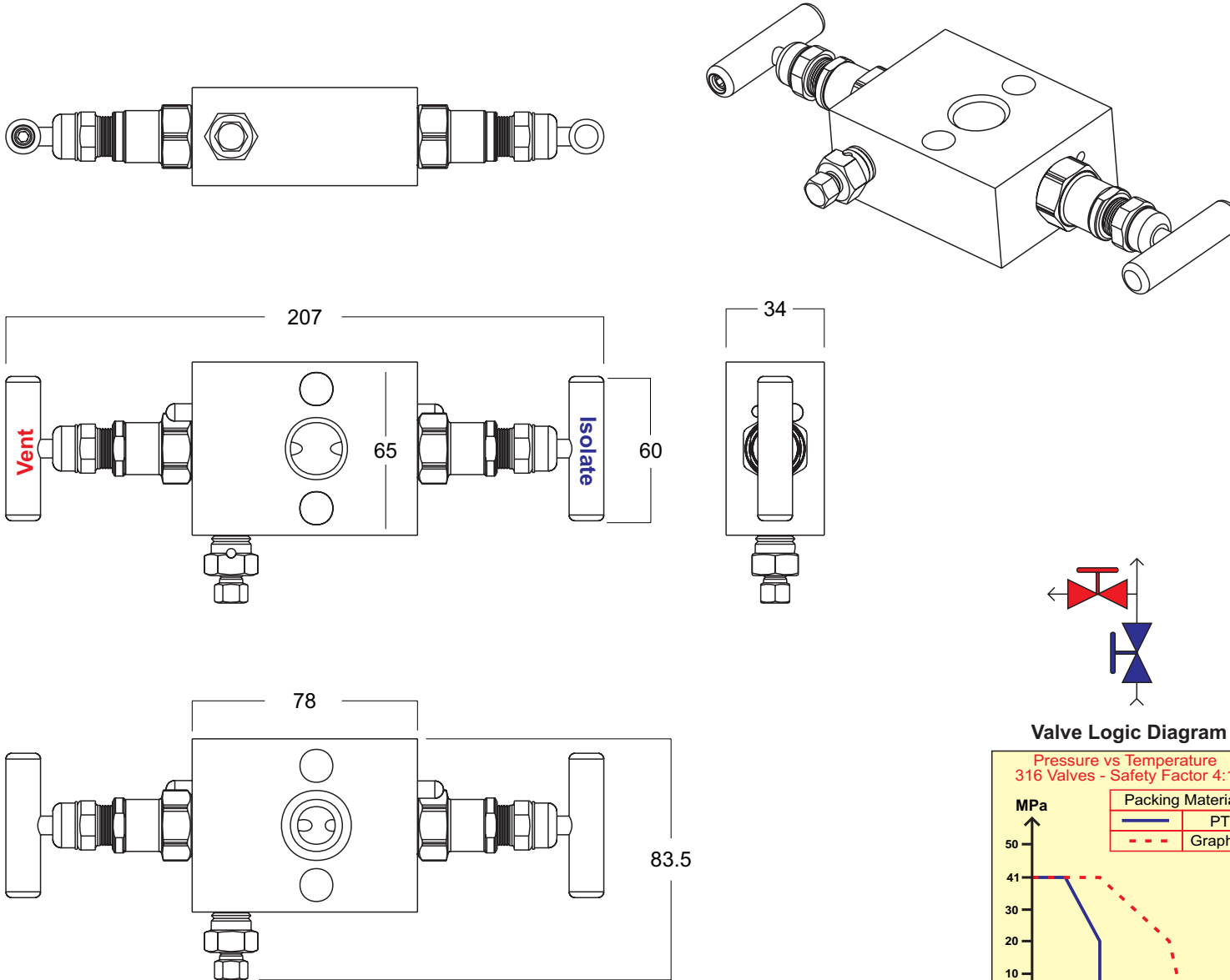


S3/F



S5/F

Specifications are subject to modification without prior notification



Notes
SUSTECH Precision valves are available in a variety of materials. The **SUSTECH Precision Valvehead** offers :-

- Valveheads Positively Anchored
- Fully Articulated Back-sealing Shaft
- Dual, Pressure Activated, Stuffing Boxes
- Anti-blowout Shaft with Full Process Isolation
- Bubble Tight Seal Guaranteed on Liquids & Gases

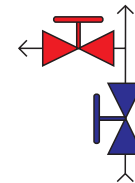
Marking

- Manufacturer
- Flow Schematic
- Operating Limits
- Colour Coded Dust Caps
- All Element Traceability & Materials of Construction

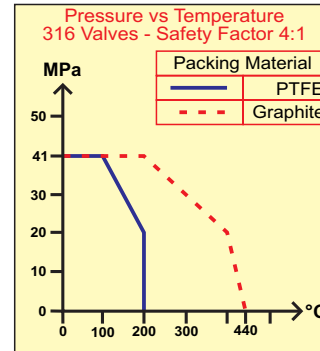
Design Criteria

SUSTECH Precision is manufactured under the supervision of DIN EN ISO 9001:2000 with design criteria from ASME B31.1 and ASME B31.3. Designs are in accordance with CSA B51-03 and ATEX PED 97/23EC (CE0035). All valves have an Over Pressure Safety margin of 4 times. All designs have been tested in accordance with ASME VIII.

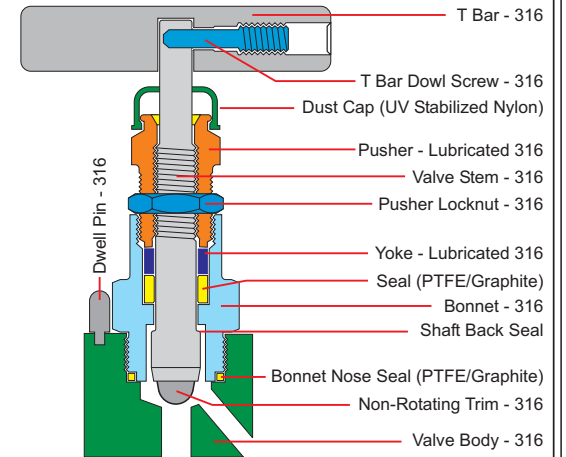
Pressure rating, see graph. **SUSTECH Precision** Pushers are grey in colour because they are coated with a lubricant.



Valve Logic Diagram



Designed to ASME B31.1 & B31.3
Tested & Approved to ASME VIII



4 Times Over Pressure Safety Margin

Quality Watch

ASME VIII
ASME B31.1
CRN:OC10939.5

CE0035
ASME B31.3
ISO 9001:2000



Fully Certified Instrument Valves
SUSTECH Precision
DIN EN ISO 9001:2000
ATEX PED 97/23/EC CSA B51

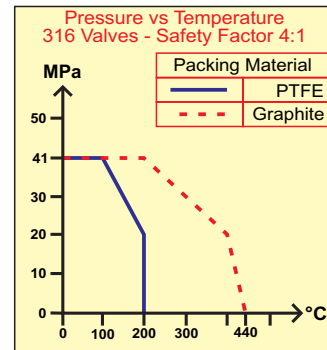
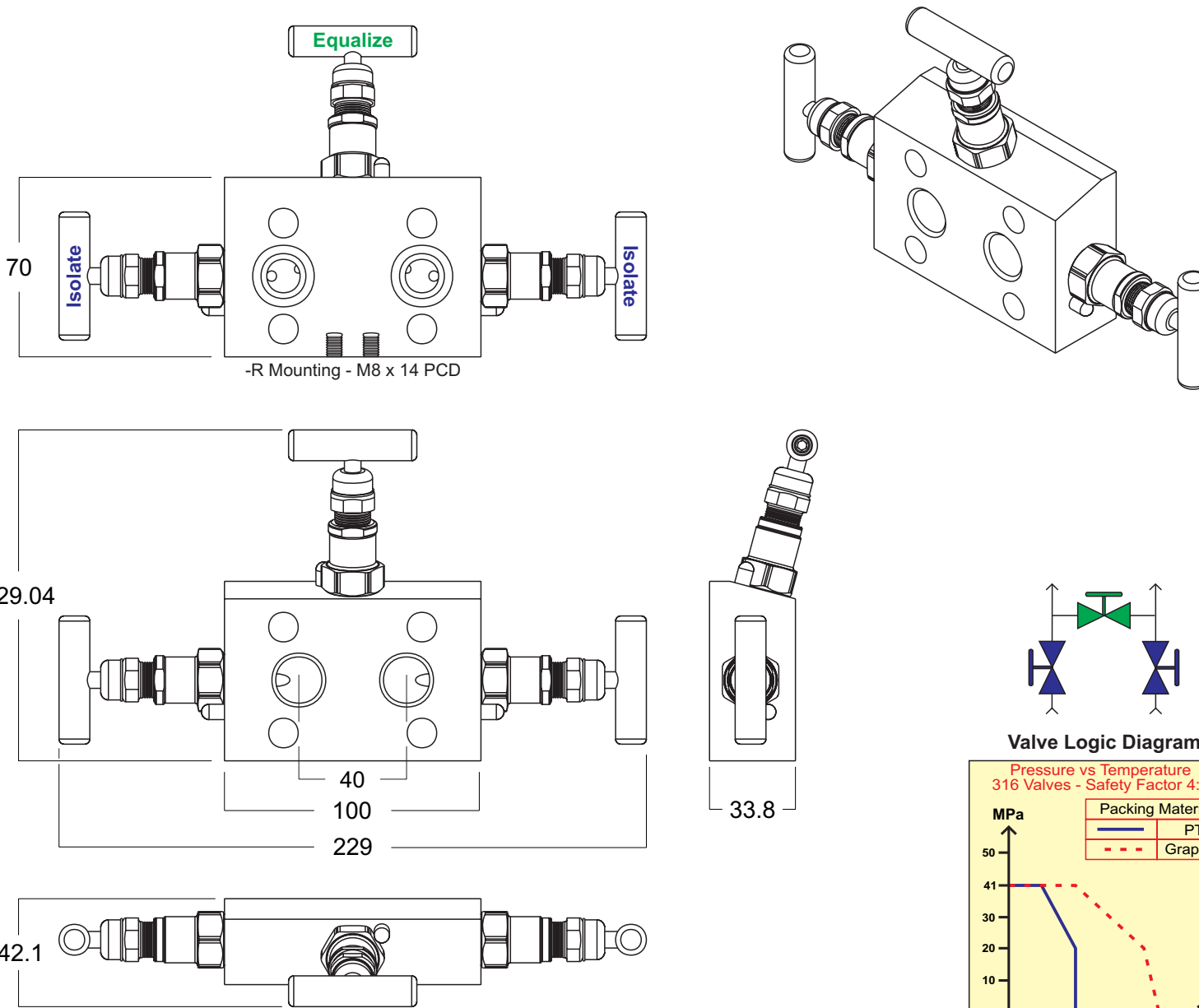
Rev : 5

Weight : 1.46 kgs

Part No : S2/FTHXX

Title : 2 Way Direct Mount

Specifications are subject to modification without prior notification



Notes
SUSTECH Precision valves are available in a variety of materials. The **SUSTECH Precision Valvehead** offers :-

- Valveheads Positively Anchored
- Fully Articulated Back-sealing Shaft
- Dual, Pressure Activated, Stuffing Boxes
- Anti-blowout Shaft with Full Process Isolation
- Bubble Tight Seal Guaranteed on Liquids & Gases

Marking

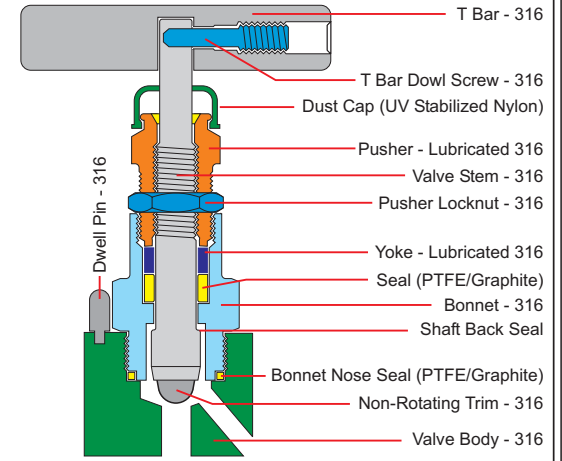
- Manufacturer
- Flow Schematic
- Operating Limits
- Colour Coded Dust Caps
- All Element Traceability & Materials of Construction

Design Criteria

SUSTECH Precision is manufactured under the supervision of DIN EN ISO 9001:2000 with design criteria from ASME B31.1 and ASME B31.3. Designs are in accordance with CSA B51-03 and ATEX PED 97/23EC (CE0035). All valves have an Over Pressure Safety margin of 4 times. All designs have been tested in accordance with ASME VIII.

Pressure rating, see graph. **SUSTECH Precision** Pushers are grey in colour because they are coated with a lubricant.

Designed to ASME B31.1 & B31.3
Tested & Approved to ASME VIII



4 Times Over Pressure Safety Margin

Quality Watch

ASME VIII
ASME B31.1
CRN:OC10939.5

CE0035
ASME B31.3
ISO 9001:2000

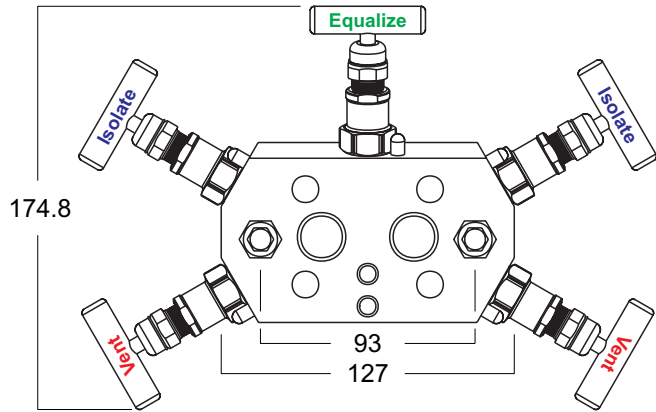
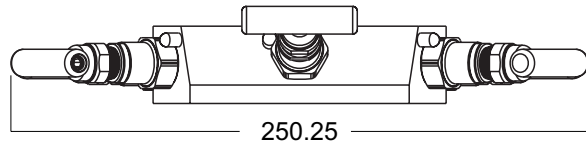
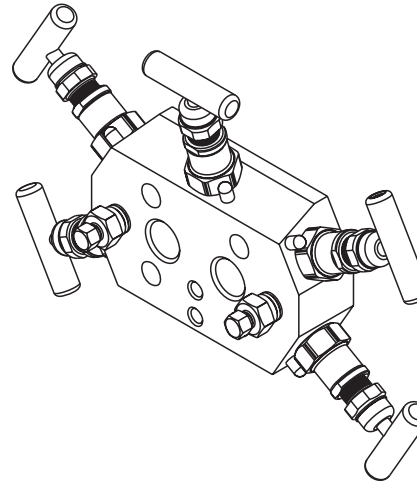
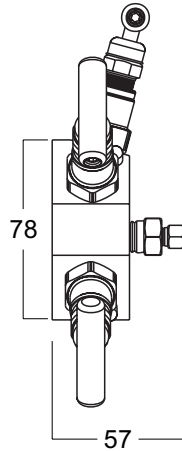
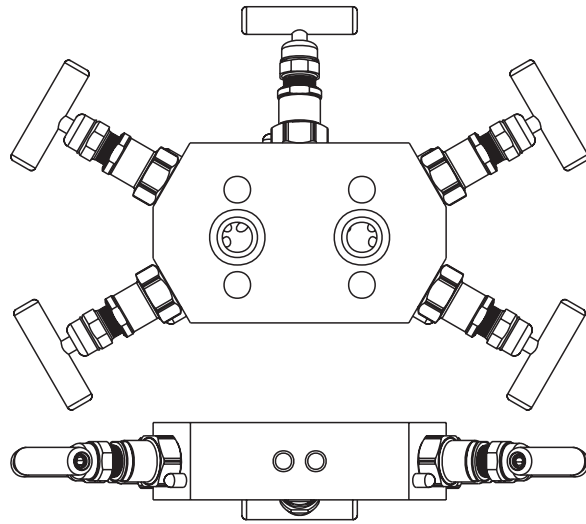


Fully Certified Instrument Valves
SUSTECH Precision
DIN EN ISO 9001:2000
ATEX PED 97/23/EC CSA B51

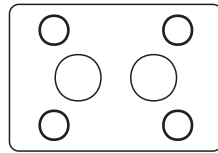
Rev : 6
Weight : 2.30 kgs

Part No : S3/FTHXX
Title : 3 Way Direct Mount

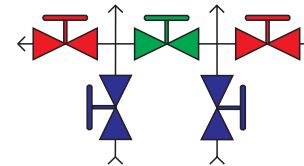
Specifications are subject to modification without prior notification



Bolting Centres : 41.3 x 54.0 mm
Inlet : 1/2" FNPT 40 mm apart

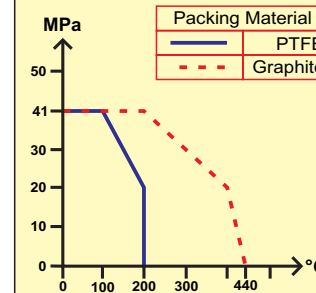


Narrow Outlet
Distance between centers : 33.0 mm
Depth of cavity 5.0 mm
Bolts Centres : 41.3 x 54.0 mm



Valve Logic Diagram

Pressure vs Temperature
Alloy 400 Valves - Safety Factor : 4



Notes
SUSTECH Precision valves are available in a variety of materials. The **SUSTECH Precision Valvehead** offers :-

- Valveheads Positively Anchored
- Fully Articulated Back-sealing Shaft
- Dual, Pressure Activated, Stuffing Boxes
- Anti-blowout Shaft with Full Process Isolation
- Bubble Tight Seal Guaranteed on Liquids & Gases

Marking

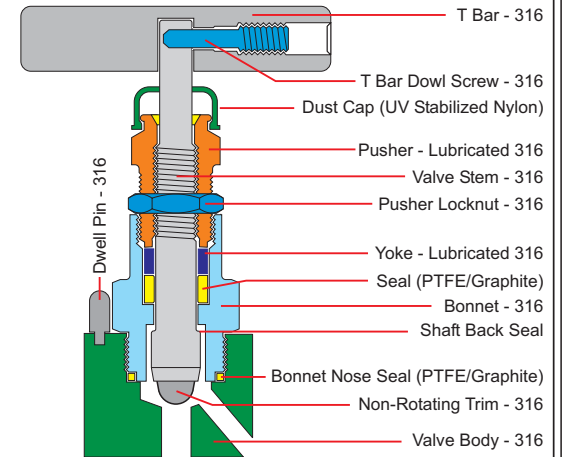
- Manufacturer
- Flow Schematic
- Operating Limits
- Colour Coded Dust Caps
- All Element Traceability & Materials of Construction

Design Criteria

SUSTECH Precision is manufactured under the supervision of DIN EN ISO 9001:2000 with design criteria from ASME B31.1 and ASME B31.3. Designs are in accordance with CSA B51-03 and ATEX PED 97/23EC (CE0035). All valves have an Over Pressure Safety margin of 4 times. All designs have been tested in accordance with ASME VIII.

Pressure rating, see graph. **SUSTECH Precision** Pushers are grey in colour because they are coated with a lubricant.

Designed to ASME B31.1 & B31.3
Tested & Approved to ASME VIII



4 Times Over Pressure Safety Margin

Quality Watch

ASME VIII
ASME B31.1
CRN:OC10939.5

CE0035
ASME B31.3
ISO 9001:2000



Fully Certified Instrument Valves
SUSTECH Precision
DIN EN ISO 9001:2000
ATEX PED 97/23/EC CSA B51

Rev : 4

Weight : 2.80 kgs

Part No : S5/FTHXX

Title : 5 Way Direct Mount