

# All stainless steel pressur gauges with Bourdon tube with or without glycerine filling

Nominal size ND 63  
Accuracy class 1.6

according to DIN EN 837-1

## Features

Ideal for hard conditions  
High reliability on a longterm basis  
Stainless steel case and measuring system  
Overange protection 1,3 times max.  
Protection IP 54 resp.IP 65 (filled)



## Applications

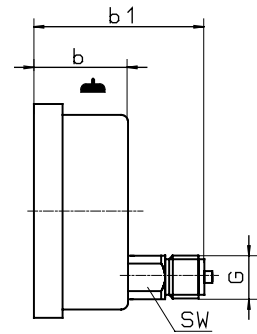
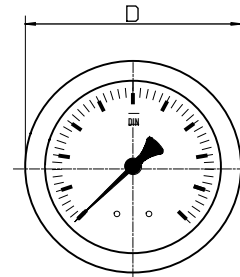
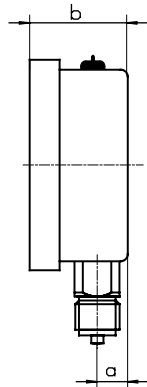
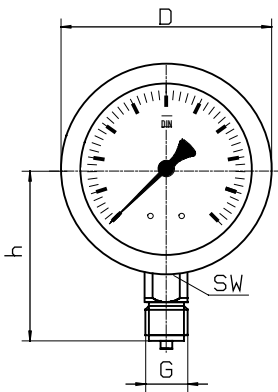
Chemical and petrochemical industry  
Foodstoffs and beverages industry  
Paper industry

	with glycerine filling			
Models and ND	MR-30 63	MR-35 63	MR-30 63 F	MR-35 63 F
Connections	bottom	back,eccentric	bottom	back,eccentric
Ranges in bar	0...1, 1,6, 2,5, 4, 6, 10, 16, 25, 40, 60, 100, 160, 250, 400, 600, 1.000 -1 / 0, -1 / +0,6, -1 / +1,5, -1 / +3, -1 / +5, -1 / +9, -1 / +15			
Application	Constant load : up to full scale value Alternating load : up to 0,9 x full scale value Overange protection 1,3 times max.			
Case	CrNi steel			
Bezel	CrNi steel			
Window	Lamineted safety glass			
Dial	Aluminium , white ,scale and imprint black			
Pointer	Aluminium, black			
Movement	CrNi steel			
Measuring element	CrNi steel ,Bourdon tube <40 bar, helical tube > 60 bar,			
Connection	CrNi steel			
Connectionthread	G 1/4 B			
Protection	IP 65 to EN 60529 / IEC 529			
Temperature drift	Medium: -20°C bis 80°C, Ambient : -25°C bis 60°C			
Weight	0,2 kg		0,25 kg	

## Dimensions

Connection bottom

Connection back, eccentric

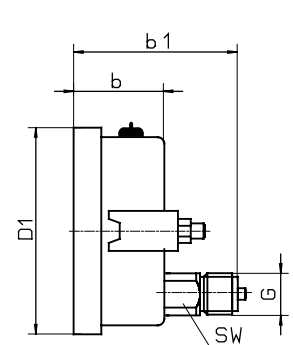
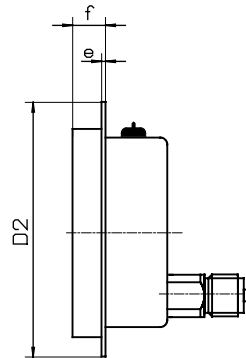
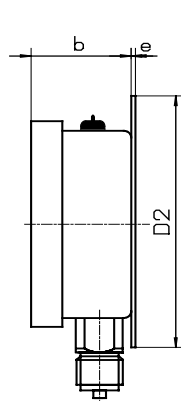
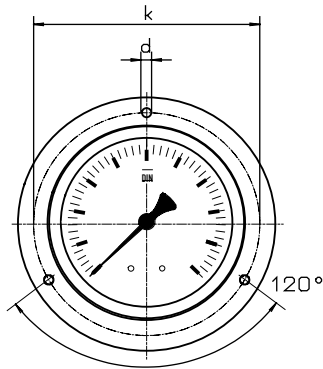


front flange

rear flange

front flange

with triangle bezel a.U-clamp



Dimensions in mm														
Model	NG	D	a	b	b1	h		D2	e	f	k	d	sw	G
MR-30	63	68,5	9,5	31	-	53		85	3	16	75	3,7	14	G 1/4 B
MR-35	63	68,5	-	31	60	-		85	3	16	75	3,7	14	G 1/4 B
MR-30 F	63	68,5	9,5	31	-	53		85	3	16	75	3,7	14	G 1/4 B
MR-35 F	63	68,5	-	31	60	-		85	3	16	75	3,7	14	G 1/4 B

### Modelspecification

