

fillable “solid front” pressure gauge

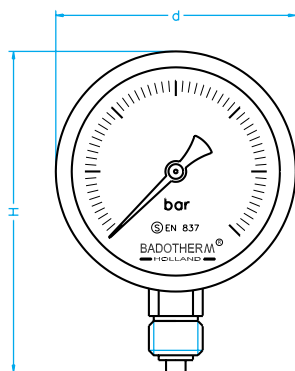
model	ø 100mm	ø 160mm
BDT20/A with bottom connection		bottom
BDT20/D with back connection		eccentric back
standard features		
case and bayonet bezel		stainless steel
bourdon tube system		stainless steel
full blow-out back		incl. baffle wall
pointer		adjustable with slotted bush
window		safety glass
range in bar or equivalent		-1/0 0/600
thread bsp - npt - bspt		1/2"
max. process temperature		200 °C
accuracy at 20 °C		1,0 %



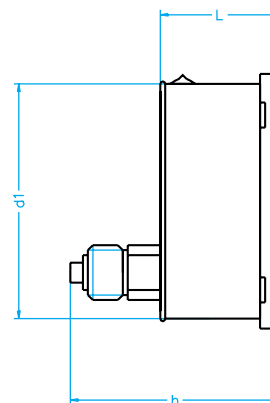
options	ø 100mm	ø 160mm
back flange for wall mounting	BDT20/C	BDT20/C
case and bezel AISI 316	a	a
glycerine filling	a*	a*
silicone filling	a*	a*
micro adjustable pointer	a	a
red pointer on dial	a	a
wetted parts monel K400	a	a
accuracy 0,5% at 20 °C	a	a
restrictor in connection	a	a
non standard thread	a	a
non standard dial	a	a
range 1000 bar	a	a

a = available as option; n = not available

* not possible with BDT20/D



type A



type D

measurements	ø 100mm	ø 160mm
d in mm	110	160
d1 in mm	100	149
L in mm	61	64
H in mm	142	200
h in mm	104	107
weight in kg	0,65	1,20

dimensions are approximate and can be changed without prior notice